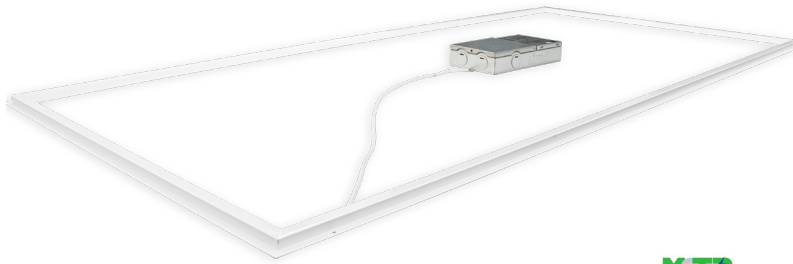


TGL-2X4-MCTP



**MCTP**

Selection:



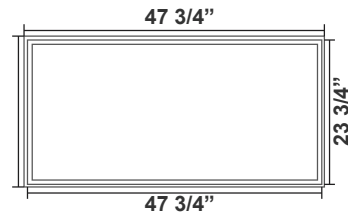
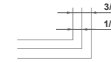
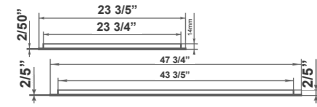
The LED Frame Light luminaire is a new design that creates innovative and outstanding lighting performance available to replace the 2x2 LED panel. It has a modern design and is easy to install. Ideal for new construction and remodel/replacement of fluorescent troffers or LED panels in commercial office spaces, schools, healthcare facilities, and retail merchandising areas. Compact ultra-thin appearance, simple installation, and outstanding performance. Assembling type in an individual package, easy to take away.

Customer Name: \_\_\_\_\_

Project Name: \_\_\_\_\_

Note: \_\_\_\_\_

Type: \_\_\_\_\_



47 3/4" (H) x 23 3/4" (W) x 5/8" (D)

## Features

- White Finish
- Multi Color Temperature & Multi Power (Selectable Switch in Driver box)
- 5-Year Warranty
- High Quality LED Chips Provide High Efficiency, Heat Dissipation, Stability, and Lumen Maintenance

## Technical Specifications

### Electrical:

- Voltage: 120-277V
- Power Factor: >0.92
- Wattage: 35W/45W/54W
- Efficacy: 150LPW

### Mechanical:

- Extruded Aluminum with White Painting
- Surge Protector
- Maximum Ambient Temperature: -22°F to +104°F
- Rated life: 50,000 hrs
- Driver/Junction Box is Separate and Connects to the Fixture with a 3Ft. Dangle.
- Driver/Junction Box Installs On Adjacent Grid, On Top, Using Your Choice Of T-bar Bracket or Westgate T-bar Bracket Model (ELB-TBAR1)
- IP20 indoor use only

### Lighting:

- Performance Lens Assembly Delivers Unique Beam Angles and Reduces Glare
- Dimmable: 120-277V 0~10V Driver for Continuous Dimming
- Driver Disconnect Provided Where Required to Comply with US and Canadian codes
- Color Temperatures: 3500K/4000K/5000K
- Multi CCT & Multi Power (Selectable Switch in Driver Box)
- Color Rendering Index: CRI ≥ 80

### Applications:

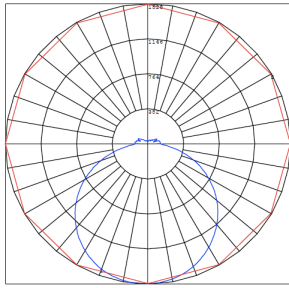
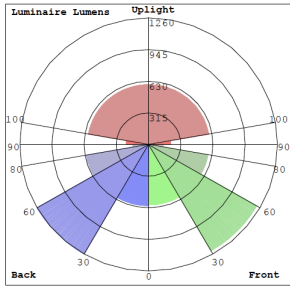
- Retail, Schools, Offices, Healthcare, Conference rooms, Hospitality, Corridors, Reception areas, Foyer Library

### Other Models:

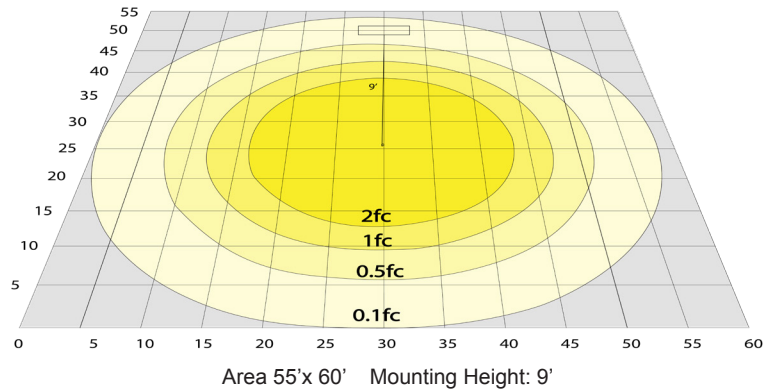
- 40W | 4000LM | TGL-2X2-MCTP



## Photometrics: TGL-2X4-MCTP



BUG Rating: B2-U4-G2



## Other Views:



Side View



Front View



Back View



Driver



Side View



Front View



Back View

## Performance Table: TGL-2X4-MCTP

| MODEL NO.    | Wattage | Lumens | LPW | Color Temp.         | Voltage  | BUG Rating |
|--------------|---------|--------|-----|---------------------|----------|------------|
| TGL-2X4-MCTP | 35W     | 5250LM | 150 | 3500K/ 4000K/ 5000K | 120-277V | B2-U4-G2   |
|              | 45W     | 6750LM |     |                     |          |            |
|              | 54W     | 8100LM |     |                     |          |            |

## Sample Ordering

Model Size CCT & Power

TGL - 2X4 - MCTP

## Factory-Installed Option:



Blank = No Option For Accessories

OPT-EM-TGL = Installed on a T-Bar Bracket to Clip on Top the T-Bar Grid

TBAR1EM = Driver

OPT-FWH-63 = 6FT 3-Wire Whip

OPT-FWH-65 = 6FT 5-Wire Whip

OPT-FWH-66 = 6FT 6-Wire Whip

## Example:

1. TGL-2X4-MCTP (FOR TGL 54W MCTP FIXTURE 120-277V)

2. TGL-2X4-MCTP (FOR TGL 54W MCTP FIXTURE 120-277V)  
OPT-EM-TGL (Installed on a T-Bar Bracket to Clip on Top the T-Bar Grid)

## FACTORY-INSTALLED OPTION:



**OPT-EM-TGL**  
Installed on a T-Bar Bracket  
to Clip on Top the T-Bar Grid



**OPT-FWH-63**  
**OPT-FWH-65**  
**OPT-FWH-66**  
6FT 3/5/6 Wire Whip

